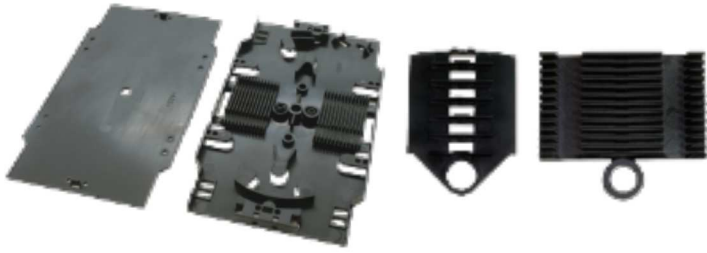


Cable Management Accessories

Splice Tray, Lid and Splice Holder



This tray provides a low cost solution for protecting and managing splices within a patch panel. The kit includes a splice holder, tray and lid.

SPT03 - Splice Tray Including Heat Shrink Splice Holders and Lid

SPT04 - Splice Tray Including Crimp Splice Holders and Lid

Splice Tray Splice and Hinges



Using a hinge with a splice tray allows access to stacked splice trays without disturbing surrounding fibres.

BUCKLE - Splice Tray Hinge

Splice Bridge



The splice bridge provides a protection enclosure for splice protectors to be housed; an adhesive pad ensures that the splice bridge is secured.

SPICEBRIDGE - Splice Bridge (Width: 37mm - Length: 95mm - Depth: 16mm)

Splice Cassette with Clear Lid



This tray provides a low cost solution for protecting and managing splices within a patch panel. The kit includes a slice holder, tray and lid.

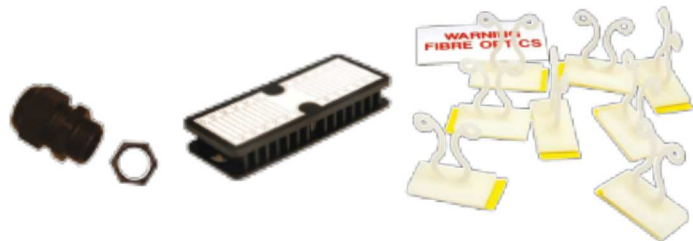
SPLICE12BASEUNIT - 2 x 6 way stackable splice cassette complete with clear lid.

SPLICECASSETTE12 - Additional 2 x 6 way stackable splice cassette complete with clear lid.

(Cassettes are hinged to one side)

Width: 90mm Length: 160mm Depth: 7mm

Cable Management kit



The cable management kit is an essential item which ensures that fibre is maintained in the correct way.

CABLEMANAGEMENT - Cable Management Kit 1x Self adhesive splice bridge, 1x Safety sticker, 8x Self adhesive bunny clips, 1x Cable gland (13.5mm)

Bunny Clips



Within a patch panel it is important to maintain good housekeeping, these self adhesive bunny clips allows the installer to manage fibre in their own way.

118-68C - Cable management bunny clip with peel-off adhesive underside.

Cable Gland



A cable gland offers good protection for incoming cables, suitable for different diameters ranging from 6mm to 14mm. As the gland is tightened it provides a seal around the cable.

PG13.5GLAND - Cable Gland (Fits 20mm patchpanel hole and accommodates cable up to 12mm diameter.)

Front Mounted Quick Nut



Inserting a panel into a rack becomes easy when a cage nut is used, the captive nut is clipped into the rack, then the screw is easily inserted as there is no need to hold the nut.

178-45D - Cage Nuts, Bag of 50

1U Bar with Brush Strip



The 1U bar includes a brush strip feature which provides access into the rack, having a brush instead of an open channel encourages the flow of air within the rack rather than allowing it to flow out the front of the panel.

1UBRUSHSTRIP03 - 1U Brush Strip

1U Cable Bar with Brush Strip



This cable management bar provides an innovative solution for supporting cables. The 1U bar also includes a brush strip feature which provides access into the rack, having a brush instead of an open channel encourages the flow of air within the rack rather than allowing it to flow out the front of the panel.

1UCABLEBAR/BR - 1U Cable Management Bar with Brush Strip

Cable Management Bar



This cable management bar provides an innovative solution for supporting cables.

1UCABLEBAR - 1U Cable management bar

1UCABLEBAR/G - 1U Cable management bar - Grey

2UCABLEBAR - 2U Cable management bar

Recessed Cable Management Bar



Having a recessed management bar allows the cables to be flush with the front of the rack.

1UCABLEBAR/REC - 1U Cable management bar with brush - Recessed - Black

1UCABLEBAR/REC/G - 1U Cable management bar with brush - Recessed - Grey

Blanking Plates



Using blanking plates ensures that the airflow remains over the essential active components rather than flowing out of the rack for un-used space.

1UBLANK - 1U blank plate

2UBLANK - 2U blank plate

3UBLANK - 3U blank plate

Panel Blanks



STBLANK - ST Blank Plug (Also used for FC)

SCDUPLEXBLANK - SC Duplex Blank Plug

SCSIMPLEXBLANK - SC Simplex Blank Plug

Crimp Splice Protector



SPLICECRIMP - Metal Crimp Splice Protector

Ordering Information

Description	PART NO.
Splice Tray Including Heat Shrink Splice Holders and Lid	SPT03
Splice Tray Including Crimp Splice Holders and Lid	SPT04
Splice Tray Hinge	BUCKLE
Splice Bridge	SPLICEBRIDGE
2 x 6 way stackable splice cassette complete with clear lid	SPLICE12BASEUNIT
Additional 2 x 6 way stackable splice cassette complete with clear lid	SPLICECASSETTE12
Cable Management Kit	CABLEMANAGEMENT
Cable management bunny clips	118-68C
Cable Gland	PG13.5GLAND
Cage Nuts, Bag of 50	178-45D
1U Brush Strip	1UBRUSHSTRIP03
1U Cable management bar	1UCABLEBAR
1U Cable management bar - Grey	1UCABLEBAR/G
2U Cable management bar	2UCABLEBAR
1U Cable management bar with brush - Recessed - Black	1UCABLEBAR/REC
1U Cable management bar with brush - Recessed - Grey	1UCABLEBAR/REC/G
1U blank plate	1UBLANK
2U blank plate	2UBLANK
3U blank plate	3UBLANK
ST Blank Plug (Also used for FC)	STBLANK
SC Duplex Blank Plug	SCDUPLEXBLANK
SC Simplex Blank Plug	SCSIMPLEXBLANK
Metal Crimp Splice Protector	SPLICECRIMP