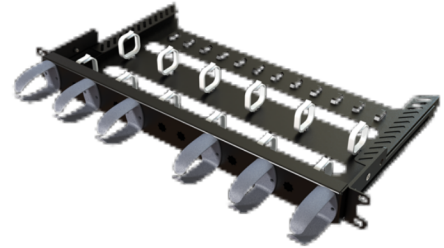


## 1U Sliding Storage/Management Tray

The 1U Sliding Management tray provides a versatile solution for managing both patch cords at the front of the rack and slack storage at the rear. The individual hooks can be placed as per the installer's preference. The sliding slack storage at the rear provides support for incoming cables which caters for both High Density UltraSlim solutions and standard deeper sliding patch panels.



### Features

- Detachable hooks to be placed as per installers preference
- 1U to provide cable management between patch panels
- 19" rack mountable
- Provides patch cable management with minimal attenuation loss
- Adjustable mounting brackets
- Sliding rear tray caters for both shallow and deep patch panels
- Hoops inside the tray provide a neat and tidy solution for excess cable management

### Applications

- Data centres, premise installations, telecommunication networks
- Ethernet, Fibre Channel, ATM, LAN, MAN and WAN
- Data communication
- Indoor applications

### Specification

Element	Characteristic
Height (mm)	44
Width (mm)	482
Depth (mm)	308
Tray Sliding Travel (mm)	170
Net weight (kg)	1.8
Hook Material	Polypropylene
Tray Material	Cold Rolled Steel
Material thickness (mm)	1.2
Tray Material coating	Electrostatic powder coating
Hook Colour	Dark Grey RAL 7015 & Grey RAL 7035
Tray Colour	Black RAL 9004 & Grey RAL 7035
Operating temperature (°C)	-40 to +60
Designed in accordance with	TIA/EIA 568.C, ISO/IEC 11801, EN50173, IEC60304, IEC61754, EN297-1
Material compliant to	RoHS2, Reach/SVHC

### Ordering Information

Description	Part No.
Black Sliding Management with Dark Grey Hooks	SLM01
Grey Sliding Management with Grey Hooks	SLM02

### Technical Drawing

