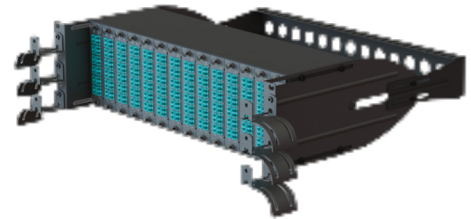


## 3U LGX Chassis

This innovative, robust, High Density 3U Chassis has been designed to accept robust, accept up to 14 LGX style assemblies.

With the ability to use a full array of adaptor types offering a flexible solution to the end user, enabling them to incorporate a multi-functional chassis which allow easy access during installation or re-work with no disturbance of the existing cable or fibres.

In the addition to the array of adaptors the chassis also offers multiple cable entry solutions, MTP/MPO Trunk Cables connected to 14 individual MTP/MPO LGX Cassettes with up to 24 fibres in each, loose tube cable connecting to 14 individual extended cassettes to allow standard splicing or 14 LGX modules for pre-terminated solutions, making this chassis one of the most flexible on the market.



### Features

- Up to 14 LGX components
- Up to 14 x 24 fibre MTP/MPO LGX Cassettes
- Multiple adaptor options available
- Fully integrated fibre management
- Splicing option available
- Flat pack for easy shipment
- Patch cord exit retrofit cable management available
- 30mm bend radius maintained throughout
- Individually labeled ports
- Accepts loose tube, distribution cable and MTP/MPO Trunk Cable
- RoHS, REACH and SvHC
- Fits standard 19"
- Rear cable management bar as standard

### Applications

- Data centers, premise installations, telecommunication networks
- Ethernet, fibre channel, ATM, LAN, MAN and WAN
- Data communication
- Indoor applications

### Specification

ELEMENT	CHARACTERISTIC
Height	3U (133.2mm)
Width	480mm
Depth	335mm
Net Weight	2.76kgs
Packaged Weight	3.24kgs
Packaged Dimensions	490mm W x 110mm H X 240mm D
IP Rating	N/A
Suitable for Adaptor Type	LGX / MTP Cassettes
Number of Module Positions	14
Mounting Adjustment Range	64mm
Material	Cold-rolled steel
Material Thickness	1.5mm
Material Coating	Electrostatic powder coating
Color	RAL 9004 / RAL 7035
Operating Temperature	-40°C to +60°C
Designed in Accordance With	TIA/EIA 568.C, ISO/IEC 11801, EN50173, IEC60304, IEC61754,EN297-1
Compliant to	RoHS, Reach/SVHC

### Ordering Information

DESCRIPTION	PART NUMBER
3U 14 Slot High Density Chassis LGXCHASSIS	