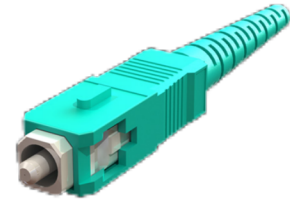


## SC Connector

SC connectors are suitable for various applications and are available in singlemode for both PC and APC and in multimode PC. The connectors come with standard boots suitable for 900µm, 2mm or 3mm cable diameters.

The SC connector is available in standard colours including blue, green and beige.



### Features

- Complies with IEC 61754-4, IEC 60784-14 and TIA 604-3
- A push-pull coupling mechanism for easy insertion and consistent connection
- Zirconia ceramic ferrule available in several performance grades
- Low insertion loss and back reflection capability
- RoHS, REACH SvHC compliant
- Individual parts packed in bulk package

### Applications

- Telecommunications networks
- CATV, LAN, MAN and WAN application
- Data processing networks
- Cable television
- Fibre-To-The-Home (FTTH)
- Premises distribution

### Specification

MECHANICAL PROPERTIES	CRITERIA	EFFECT	CONFORMANCE
Mating Durability	500 matings	<0.2 dB change	IEC 61300-2-2
Vibration	10-55Hz, 0.75 amplitude	<0.2 dB change	IEC 61300-2-1
Drop	Drop height 1m, 5 drops	<0.2 dB change	IEC 61300-2-12
Cable Retention	Magnitude 90N	<0.2 dB change	IEC 61300-2-4
Cable Torsion	1.5kg - 2.5kg for 2mm-3mm cable diameter	<0.2 dB change	IEC 61300-2-5
Operating Temperature	-25 to +70, 12 cycles	<0.2 dB change	IEC 61300-2-22
Cold	-25 for 96 hrs	<0.2 dB change	IEC 61300-2-17
Dry Heat	+70 for 96 hrs	<0.2 dB change	IEC 61300-2-18

### SC Connector PC and APC - Singlemode

OPTICAL PERFORMANCE*	GRADE A	GRADE B	GRADE C	CONFORMANCE
IL MAX/Master (Acceptance)	0.10dB	0.15dB	25dB	IEC 61300-3-4
IL MAX/Random (97%)	0.20dB	0.30dB	0.40dB	IEC 61300-3-34
Ave/Master	0.08dB	0.12dB	0.18dB	IEC 61300-3-4
Ave/Random	0.08dB	0.12dB	0.18dB	IEC 61300-3-4
Return	55/70dB	55/65dB	55/65dB	IEC 61300-3-6

### SC Connector PC - Multimode

OPTICAL PERFORMANCE*	PREMIUM	STANDARD	CONFORMANCE
IL MAX/Master (Acceptance)	0.15dB	0.3dB	IEC 61300-3-4
IL MAX/Random (97%)	0.25dB	0.4dB	IEC 61300-3-34
Ave/Master	0.08dB	0.15dB	IEC 61300-3-4
Ave/Random	0.1dB	0.2dB	IEC 61300-3-34

\* Achievable with FibreFab process and specified optical fibre

### Ordering Information

Singlemode		GRADE A	GRADE B	GRADE C		
PC	Simplex	900µm	SCSM9SMPX-H	SCSM9SMPX-P	SCSM9SMPX	
		2mm	SCSM2SMPX-H	SCSM2SMPX-P	SCSM2SMPX	
		3mm	SCSM3SMPX-H	SCSM3SMPX-P	SCSM3SMPX	
	Duplex	2mm	SCSM2DPX-H	SCSM2DPX-P	SCSM2DPX	
		3mm	SCSM3DPX-H	SCSM3DPX-P	SCSM3DPX	
		900µm	SCAPC.9MM-H	SCAPC.9MM-P	SCAPC.9MM	
APC	Simplex	2mm	SCAPC2MM-H	SCAPC2MM-P	SCAPC2MM	
		3mm	SCAPC3MM-H	SCAPC3MM-P	SCAPC3MM	
		2mm	SCAPC2DPX-H	SCAPC2DPX-P	SCAPC2DPX	
	Duplex	3mm	SCAPC3DPX-H	SCAPC3DPX-P	SCAPC3DPX	
		Multimode		PREMIUM	STANDARD	

PC	Simplex	900µm	SCMM9SMPX-P	SCMM9SMPX
		2mm	SCMM2SMPX-P	SCMM2SMPX
		3mm	SCMM3SMPX-P	SCMM3SMPX
	Duplex	2mm	SCMM2DPX-P	SCMM2DPX
		3mm	SCMM3DPX-P	SCMM3DPX