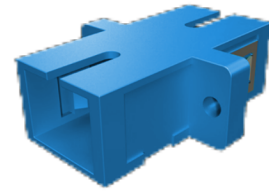


## SC Adaptors

Our range of high quality SC adaptors have high precision alignment sleeves for reliability and improved reconnectability. For singlemode applications a ceramic sleeve is supplied to ensure a high precision alignment. For multimode applications a phosphor bronze sleeve is supplied. The housing is available in different colours with options for flange or flangeless body, metal clips or inbuilt clips.



### Features

- Complies with IEC 61754-4 and IEC 60784-14 standards
- High precision alignment sleeve
- Low insertion loss and improved reconnectability
- RoHS, REACH SvHC compliant
- Available in simplex and duplex adaptors
- Also available are SC simplex adaptors with a shutter

### Applications

- Data centres
- Premise installations
- Telecommunication networks
- Ethernet, Fibre channel, ATM, LAN, MAN and WAN

### Specification

	Ceramic	Phosphor Bronze	Conformance
Insertion Loss (Typ)	0.1dB	0.15dB	IEC 61300-3-4
Mating Durability	-	500	IEC 61300-2-2
Receptacle Retention Force	-	2N – 5.9N	IEC 61754-4
Operating Temperature	-	-25 to + 70, 12 cycles	IEC 61300-2-22

### Ordering Information

MODE	TYPE	COLOUR	PART NO.	
			SIMPLEX	DUPLEX
SM	APC	GREEN	SCAPCUSGREEN	SCAPCUDGREEN
SM	PC	BLUE	SCUSZR02	SCUDZR02
MM	PC	BEIGE	SCUSPHRBEIGE	SCUDPHRBEIGE
MM	PC	AQUA	SCSMPXAQUA	SCDPXAQUA