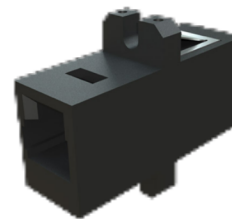


MTRJ Adaptors

We offer a choice of MTRJ adaptors for alignment of the MTRJ connectors.

In the case of the MTRJ system the alignment is carried out by two small pins fitted to one of the connectors and the adapter is designed to support and lock the connectors. When joining MT-RJ connectors, one connector must always be male with pins and one must be female without pins.



Features

- Plug-jack (RJ45) design
- TIA/EIA568-A compliant
- Precision moulded for proper alignment
- Available in black and beige coloured body

Applications

- Gigabit Ethernet, Asynchronous Transmission Method (ATM)
- Premise installations
- Industrial and military applications

Specification

	SINGLEMODE	CONFORMANCE
Insertion Loss (Typ)	0.2dB	IEC 61300-3-4
Mating Durability	500 matings	IEC 61300-2-2
Receptacle Retention Force	2N – 5.9N	IEC 61754-13
Vibration Test	10 - 55Hz 0.75 amplitude	IEC 61300-2-1
Drop Test	Drop height 1m, 5 drops	IEC 61300-2-12
Operating Temperature	-25 to + 70, 12 cycles	IEC 61300-2-22

Ordering Information

Description	Part No.
Multimode - Beige MTRJUNITER	
Multimode - Black MTRJBLK	