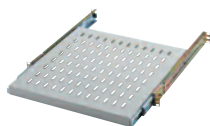


Excel Shelves

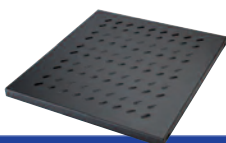


Photograph represents style only

We offer a full range of fixed and sliding shelves in a selection of sizes, to suit the range of Excel enclosures including the Equipment Series and Server+ cabinets.

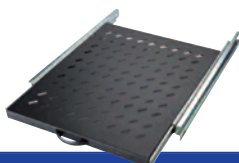
Features

- Choice of depths
- Available in grey or black
- Compatible with all Excel floor and server cabinets
- All fixed shelves are 90kg load bearing
- All sliding shelves are 60kg load bearing



Fixed Shelves

Part No. Grey	Part No. Black	Shelf Depth	Suitable for cabinet size					
			600 x 600	600 x 800	600 x 1000	800 x 600	800 x 800	800 x 1000
540-524	540-524-BK	400mm	✓			✓		
540-521	540-521-BK	525mm		✓			✓	
540-522	540-522-BK	720mm			✓			✓



Sliding Shelves

Part No. Grey	Part No. Black	Shelf Depth	Suitable for cabinet size					
			600 x 600	600 x 800	600 x 1000	800 x 600	800 x 800	800 x 1000
540-531	540-531-BK	400mm	✓			✓		
540-535	540-535-BK	525mm		✓			✓	
540-536	540-536-BK	720mm			✓			✓

Excel Shelves

Adjustable Depth Shelves

The Excel adjustable depth shelves provide great flexibility within the cabinet. Choose from black or grey. Two shelves fully adjustable, either 385mm to 605mm or 530mm to 920mm deep. Fitted using just 1u of the 19" profiles. Maximum weight loading is 80kg when closed or 60kg when fully extended.

Features

- Easy fixing to the 19" profiles
- Fully adjustable
- Choice of depths
- Available in black or grey
- Max load bearing 60 - 80kg
- Compatible with all Excel floor and server cabinets



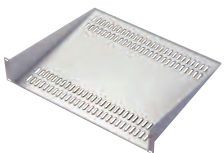
Description	Part Number - Grey	Part Number - Black
1u 19" fixing adjustable shelf, 385mm - 605mm	540-525	540-525-BK
1u 19" fixing adjustable shelf, 530mm - 920mm	540-526	540-526-BK

Front Mounted Modem/Cantilever Shelves

Available in two heights to fix directly to the front of the 19" mounting angles.

Features

- Choice of depths
- Available in grey or black
- Maximum load 35kg
- Compatible with all Excel floor and wall cabinets



Description	Part Number - Grey	Part Number - Black
190mm Deep Modem/Cantilever Vented Shelf 1u	MS19	MS19B
400mm Deep Front Mounted Modem/Cantilever Vented Shelf 2u	MS40	MS40B

Universal Keyboard Turntable Shelf

Enables a standard keyboard to be used in a standard 19" wide rack. Turntable permits a keyboard which is wider than 450mm to be turned through 90 degrees for storage. Universal mounting fits uprights set between 450 and 750mm deep.

Features

- Light Grey Painted Finish
- Fitted with extension slides

Description	Part Number - Grey	Part Number - Black
Keyboard Turntable Shelf	KT750	KT750-BK

