

Excel Baying Kit



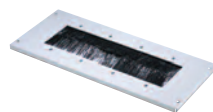
The bolt-together kit is used to secure cabinets together in a bay or suite.

Features

- Easy to fit

Description	Part Number - Grey	Part Number - Black
Baying kit, to suit Excel floor cabinet and Equipment Rack – 600, 800, 1000	540-448	540-448-BK
Baying kit, to suit Server+ Series	-	540-449-BK

Excel Brush Cover Top Entry



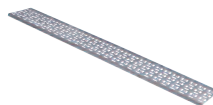
Cable entry top panel fitted with brush strips to restrict particle ingress. Dimension: 450 x 200mm.

Features

- Compatible with Excel floor standing and Equipment Series server cabinets

Description	Part Number - Grey	Part Number - Black
Brush Cover Top Entry	540-298	540-298-BK

Excel Cable Tray



The lightweight design makes installation and cable feed quick and easy.

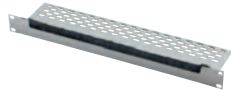
Features

- Available in a range of sizes
- 150mm wide
- Compatible with all Excel Floor Standing and Server cabinets

Description	Part Number
22u Cable Tray	540-291
27u Cable Tray	540-288
39u Cable Tray	540-294
42u Cable Tray	540-296
47u Cable Tray	540-297
Cable Tray Bracket (required for fitting trays)	540-165

Brush Strip Panel

This panel is suitable for fitting below patch panels to allow cable entry into the rack. The rear cable support section incorporates holes for securing cables.



Features

- Brush protected cable entry
- Wide cable slot to allow spacing of cables
- Compatible with all Excel Wall, Floor Standing and Server cabinets
- Cable support facility
- Numerous holes to facilitate cable attachment

Description	Part Number - Grey	Part Number - Black
1u x 19" Brush Strip Panel	540-443	540-443-BK

Excel Light Fixtures

The Excel 1u 19" light fixture provides convenient lighting within cabinets where there is an insufficient light source. Easily fitted to the 19" profiles and available in two options, manually operated or activated upon the opening of the door.



Features

- Easy fixing to the 19" profile
- Can be operated manually or activated by the opening of the door
- Complete with 3mtr mains lead
- Compatible with all Excel wall, floor and server cabinets

Description	Part Number
Light fixture manual switch	541-108
Light fixture 'door opening' auto on/off	541-109

Earth Bonding Kit

An Earth Bonding Kit is installed between the frame and doors, all panels are fitted with earth studs.



Description	Part Number
Earth Bonding Kit, 4 wires	540-097
Earth Bonding Kit for Wall Boxes, 8 wires	540-095

Cage Nuts

EXCELESSENTIALS

Cage nuts are used to fit equipment to the 19" profiles.



Description	Part Number
Cage Nuts, pack of 50	M6CNU

Excel Wall Mount Frame



This compact wall mounted frame is ideal for cabling installations of a small number of points. Any number of units can be fixed together and the optional cover plate can be fixed top or bottom.

Features

- Compact low profile design
- Hinged frame allows rear access

Description	Part Number
2u Hinged wall mount frame 150mm deep	WB2UB
3u Hinged wall mount frame 150mm deep	WB3UB
4u Hinged wall mount frame 150mm deep	WB4UB
6u Hinged wall mount frame 150mm deep	WB6UB