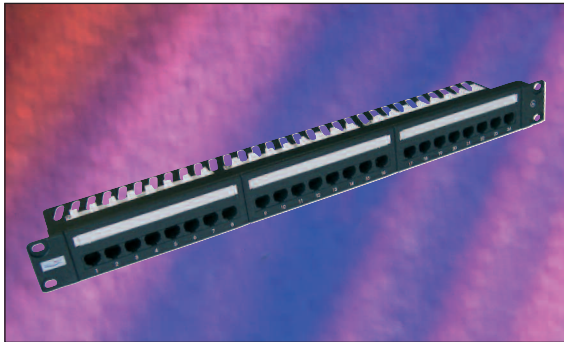


## Excel Category 6 Unshielded Twisted Pair (UTP) Right Angle Patch Panel



25 Year System Warranty

### Category 6 Compliant

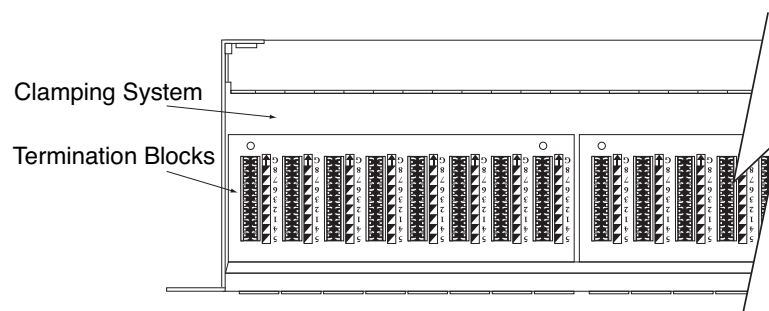
- TIA/EIA 568-B.2-1
- EN50173-1
- ISO/IEC 11801

### Features

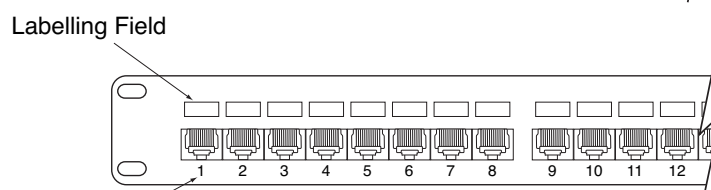
- Category 6 compliant
- Backward Compatible
- Choice of Port Density
- Choice of Label System
- LSA Style Termination Blocks
- 25 year system warranty
- BSRIA Number 1 private label, by market share for the last three years

### Product Overview

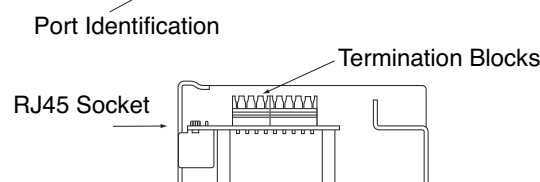
Excel Category 6 UTP patch panels are manufactured and tested to the TIA/EIA 568-B.2-1, EN50173-1 and ISO/IEC 11801.2 Category 6 specifications and have been designed to comply with the link and channel performance requirements. Each panel has a screen printed labelling field positioned above each port, included with the panel is a pre printed self adhesive labelling sheet – pre numbered 1- 96, for fast and easy labelling on site. Termination can be made using LSA compatible tooling and ease of installation is assured due to the built in rear cable management at a 90° angle to the panel facia.



Plan View



Front Aspect



Side Aspect

## Performance Overview

Excel Category 6 patch panels are manufactured and tested to the Category 6 performance standards defined by the EIA/TIA, ISO and EN standards bodies. A range of performance characteristics are tested up to 250MHz including return loss, attenuation and near and far end crosstalk (NEXT and FEXT) for which both worst case and power sum tests are completed. Actual performance far exceeds the required standard – when tested in isolation and in circuit – resulting in significant headroom for even the most demanding of applications.

As well as providing link and channel compliance – when installed with Excel category 6 components – with the aforementioned specification – the panel is also backward compatible with Category 5 and 5e components.

## Performance / Specification Table

Specification:	Category 6 compliant
Wiring Specification:	TIA 258A/568B
Port Density:	24 ports per 1u (44mm)
Dimensions:	480mm wide x 102mm deep x 44mm high
RJ45 Jack:	Min life expectancy 700 insertions
RJ45 Jack:	50 micron gold plated contact pins
IDC Contacts:	LSA style, maximum 100 reterminations
NEXT at 250MHz	SPEC - 33.14dB (in channel worst pair) Actual - 38.87dB (in channel worst pair)
FEXT at 250MHz	SPEC - 15.33dB (in channel worst pair) Actual - 22.29dB (in channel worst pair)

## System Warranty

When installed with Excel Category 6 cables and components by an accredited Excel Cabling Partner, this product is supported by a comprehensive 25 year product and applications warranty. This warranty assures not just standard compliance but also backward compatibility with Category 5 and 5e cables and components.

## Typical Applications

- 100 Base-TX
- 1000 Base-TX Gigabit Ethernet
- Composite Video
- Token Ring
- 155 Mbps ATM
- 622 Mbps ATM

## Part Number Information

Part No.	Description
100-302	Excel Category 6 24 port 1u Right Angle Black Patch Panel



ITEL d.o.o.  
Kukuljeviceva 5  
Croatia, Split 21 000

Tel: +385 21 567 386 Fax: +385 21 567 387  
Email: deni.mandic@itel.com.hr Web: www.itel.com.hr