

Excel Category 6 and 5e Solutions

Excel is a complete, end-to-end networking solution, offering exceptional value for money, performance and support, manufactured to International quality standards and covered by a comprehensive no-nonsense single warranty programme.

The independent market research organization BSRIA, reported on over 15 brands of structured cabling in its market survey of March 2008. Of these, four companies accounted for over 53% of the total market when measured by value. Excel is proud to have recorded fourth position for the second year running, in what is widely regarded as the authoritative survey of the UK market.

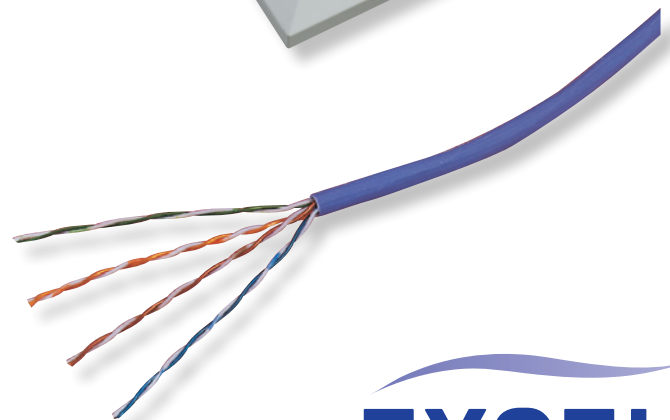
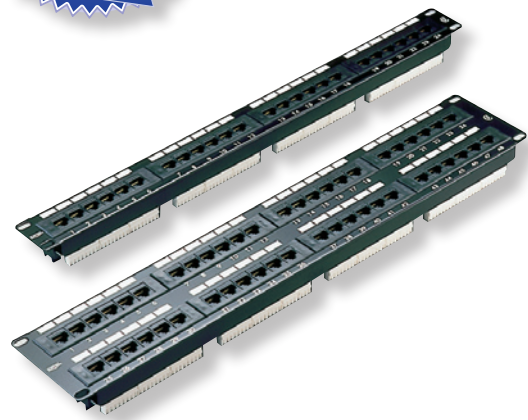
25 Year System Warranty

With an emphasis on compatibility and standards compliance 'from cable to cabinet', reliability and product availability, Excel is the complete trusted system. When installed by an accredited Excel Cabling Partner (ECP), the Excel structured cabling system is supported by a comprehensive 25 year warranty programme covering not just copper twisted pair cabling, but also optical fibre links and voice multipair backbones.

Technical Excellence

Each of the key components within the Category 6 and 5e solutions is approved to relevant ISO or TIA/EIA standards by recognized independent test houses. Installed Excel systems do not just meet defined standards, they exceed them. The Excel Category 6 system provides bandwidths of 250MHz. A range of performance characteristics are tested up to 250MHz including return loss, attenuation and near and far end crosstalk (NEXT and FEXT) for which both worst case and power sum tests are completed.

When tested both in isolation and in circuit, actual performance far exceeds the required standard, resulting in significant headroom for even the most demanding of applications.



System Choice – Copper Cat 6 and 5e

	Category 6	Category 5e
U/UTP	✓	✓
F/UTP	✓	✓
F/FTP	-	-
LSOH Cable	✓	✓
Modular Patch Panels	✓	✓
Toolless Outlets	✓	✓
Colour Coded Product	✓	✓
25 Year Warranty	✓	✓



ITEL d.o.o.
Kukuljeviceva 5
Croatia, Split 21 000

Tel: +385 21 567 386 Fax: +385 21 567 387
Email: deni.mandic@itel.com.hr Web: www.itel.com.hr