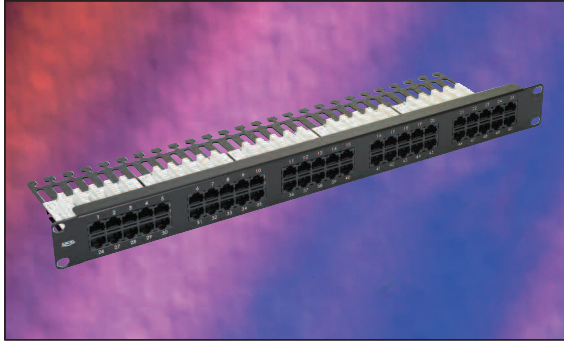


EXCEL

Excel High Density RJ45 Voice Patch Panels



High port density design

3 pair connection to each port

Built in rear cable management tray

Features

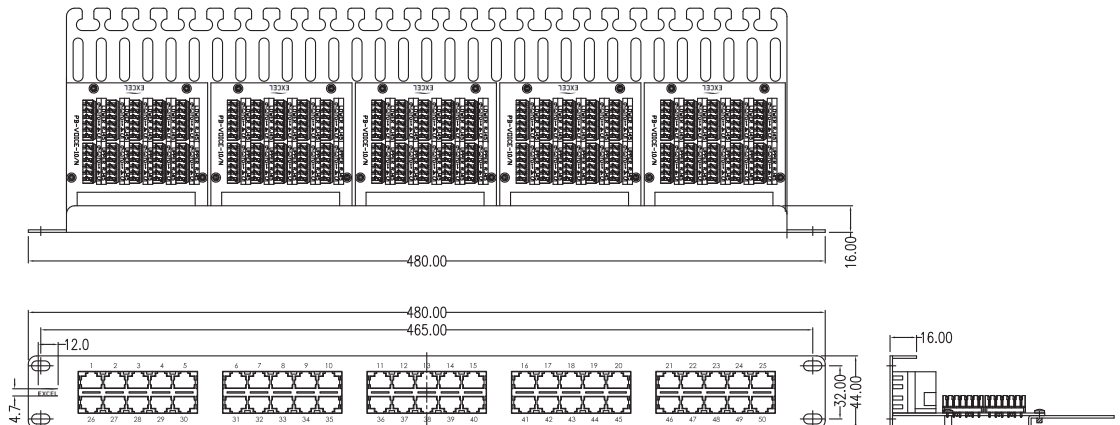
- LSA compatible IDC blocks
- Upto 50 x RJ45 ports in 1u of rack space
- Built in rear cable management
- Supplied with cable ties and cage nuts

Product Overview

The Excel high density RJ45 patch panel is designed specifically for use with high pair count voice multipair cables, such as the Category 3 or CW1308 products found within the Excel cable range.

A standard 1u panel frame is populated with upto 50 ports – 25 port option is also available. Each style of panel has an integral rear cable management tray positioned at a right angle to the panel front. As well as providing a stress free area in which to dress the multiple pairs, the tray also houses the LSA compatible termination blocks.

Each port can be terminated with upto 3 pairs, although a two pair circuit is most common, allowing for 100 pair links to be terminated across a standard 50 port 1u panel.



Product Overview

Excel high density voice patch panels are designed to support both analogue and digital voice systems and can be terminated with standard 4 pair cables, multipair voice cables such as CW specification or EIA/TIA Category specification.

System Warranty

When installed with Excel data or voice cables by an accredited Excel Cabling Partner, this product is supported by a comprehensive 25 year product and application warranty.

Typical Applications

- Analogue Voice
- Digital Voice
- ISDN

Part Number Information

Part No.	Description
100-464	1u 3 pair 50 port RJ45 voice panel, Black
100-465	1u 3 pair 25 port RJ45 voice panel, Black



ITEL d.o.o.
Kukuljeviceva 5
Croatia, Split 21 000

Tel: +385 21 567 386 Fax: +385 21 567 387
Email: deni.mandic@itel.com.hr Web: www.itel.com.hr